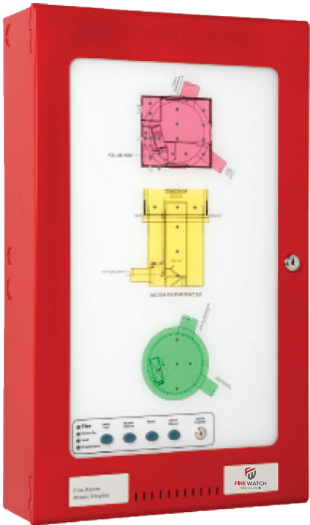


ORCA MATRIX

Analogue Addressable Fire Repeater

Features

- ▶ Available in Red or Grey
 - ▶ Up to 504 LED's can be controlled from any ORCA panel
 - ▶ Select up to 12 printed colours (not including background and building outline)
 - ▶ Available in a range of standard enclosures to suit any applications.
- ▶ Custom sized units can be made upon request
 - ▶ Choice of Red, Green or Yellow LED's
 - ▶ ORCAMATRIX can easily be upgraded on site with minimal cost and effort



Description

The ORCAMATRIX system uses flexible, optic light guides to illuminate areas on a floor plan, laid over a high-resolution grid. This unique system enables indicators to be moved, removed or added on site without the need for any wiring.

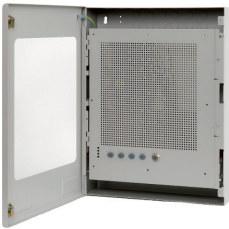
All indicators can be configured to operate upon any event type and at point, zone or group level via the powerful and intuitive Loop Explorer configuration programme. ORCAMATRIX can be supplied with or without common LEDs and controls. Optional LED's indicate Power on, Fire, Trouble and Disablement and optional controls are for Alarm Silence, Buzzer Silence, Lamp Test and Reset.

Housed in attractive, slimline enclosures to match Elite fire alarm panels and with high quality, full colour or monochrome floor plans, ORCAMATRIX provides a clear, geographical indication of fire alarm activation enabling speedy identification of the source of an alarm.

Panels				
No. LED's	Standby Current	Full Alarm Current	Batteries for 24 hours	Batteries for 48 hours
40	0.026	0.09	0.88Ah	1.76Ah
72	0.052	0.18	1.75Ah	3.5Ah
88	0.078	0.36	2.8Ah	5.2Ah



View showing mimic mounted on inner door



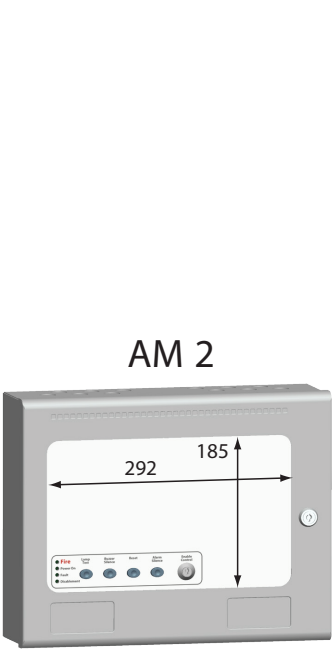
View showing LED grid



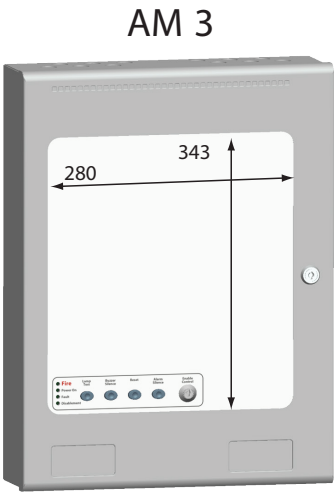
View showing internal layout

Specification

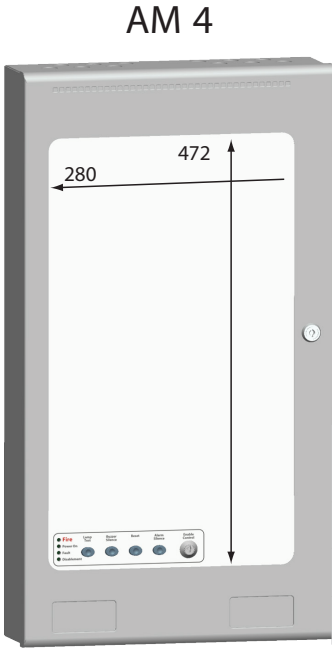
Construction	1.5mm mild steel
Finish	Expoxy powder coat
Mimic	3mm Clear Anti-Glare Acrylic
Supply voltage	21 to 30V DC
Supply current	See above
Terminal capacity	22 AWG to 12 AWG solid or stranded
Enclosure size & mimic area	See 'Enclosure size options'
Cabinet locks	CAT30 Key
Communications interface	RS485- ORCA Serial I/O bus protocol
Maximum distance from control panel	4000 feet using RS485 data cable
IP rating	IP30
Operating Temperature	-5c to 50c
Number of indicators (standard models)	AM2 size- up to 40 LED's, AM3 size- up to 72 LED's. AM4 size- up to 88 LED's.



Max. number of LED's = 40
 Will house 1 x 8 Red LED driver PCB
 and 3 x 16 LED extension PCB's
 (Red, Green or Yellow)
 369mm wide x 310 mm high x
 90mm deep



Max. number of LED's = 72
 Will house 1 x 8 Red LED driver PCB
 and 4 x 16 LED extension PCB's
 (Red, Green or Yellow)
 369mm wide x 480 mm high x
 110mm deep



Max. number of LED's = 88
 Will house 1 x 8 Red LED driver PCB
 and 5 x 16 LED extension PCB's
 (Red, Green or Yellow)
 369mm wide x 610 mm high x
 127mm deep